



Pipette tips

epT.I.P.S.® Motion Reloads

Instructions for Use

Copyright © 2024 Eppendorf SE, Germany. All rights reserved, including graphics and images. No part of this publication may be reproduced without the prior permission of the copyright owner.

Eppendorf® and the Eppendorf Brand Design are registered trademarks of Eppendorf SE, Germany.

Eppendorf trademarks and trademarks of third parties may appear in this manual. All trademarks are the property of their respective owners. The respective trademark name, representations and listed owners can be found on www.eppendorf.com/ip.

U.S. Patents and U.S. Design Patents are listed on www.eppendorf.com/ip.

Table of contents

1	About this manual.	4
1.1	About this manual.	4
2	Safety.	5
2.1	Intended use.	5
2.2	Personal protective equipment.	5
2.3	Residual risks when used as intended.	5
2.3.1	Personal injury.	5
2.3.2	Material damage.	6
3	Product description.	8
3.1	Features.	8
3.2	Usability of the pipette tips.	8
3.3	Product overview.	9
4	Application.	10
4.1	Preparation.	10
4.1.1	epT.I.P.S. Motion Reloads on the TipHolder.	10
4.2	Operation.	11
4.2.1	Load epMotion 96 or 96xl.	11
5	Storage.	12
5.1	Storage.	12
6	Disposal.	13
6.1	Disposing of consumables.	13
7	Technical data.	14
7.1	Ambient conditions.	14
7.2	Material.	14
8	Accessories.	15
8.1	Article data.	15

1 About this manual

1.1 About this manual

This document supplements the operating manual for the corresponding epMotion.

1. Before using the product, read this document and the operating manual for the corresponding pipette completely.
2. Make sure that this document and the operating manual are available during the use of the product.

2 Safety

2.1 Intended use

The epT.I.P.S. Motion are transparent pipette tips for use on the epMotion, epMotion 96 and epMotion 96xl. The epT.I.P.S. Motion are available as Reloads.

The epT.I.P.S. Motion Reloads are intended for single use.

The epT.I.P.S. Motion in size 10 µL may only be used on the epMotion 5070, epMotion 5073 and epMotion 5075 devices.

This product can be used for training, routine and research laboratories in the Life Sciences, industrial or chemical sectors.

The product may only be used by trained and skilled personnel who have been trained in the sectors mentioned above.

2.2 Personal protective equipment

The personal protective equipment ensures the safety and protection of the users working on the device.

Personal protective equipment must comply with country-specific regulations and the regulations of the laboratory.

2.3 Residual risks when used as intended

If the product is not used as intended, the installed safety devices may not function correctly. To reduce the risk of personal injury and material damage and to avoid dangerous situations, please observe the general safety instructions.

2.3.1 Personal injury

2.3.1.1 Biological hazard

Improper pipetting of infectious liquids and pathogenic germs can damage your health.

- Observe the national regulations and the biosafety level of your laboratory.
- Wear personal protective equipment.
- Observe the Safety Data Sheets and instructions for use for the accessories.
- Read the "Laboratory Biosafety Manual" (source: World Health Organization, Laboratory Biosafety Manual, in its current version) about handling germs or biological material of risk group II or higher.

Pipette tips in waste containers and waste bags may contain flammable or infectious liquids.

- Handle and dispose of pipette tips and sample material from waste containers and waste bags in accordance with the Safety Data Sheets, safety regulations, and laboratory guidelines.

2.3.1.2 Chemical hazards

Improper pipetting of radioactive, toxic and aggressive liquids can cause serious damage to health.

- Observe the national regulations of your laboratory.
- Wear personal protective equipment.
- Observe the Safety Data Sheets for the accessories.

2.3.2 Material damage

2.3.2.1 Incorrect handling

Pipette tips deform and change size during autoclaving.

- Do not autoclave the pipette tips.
- Where appropriate, use pipette tips that are specified as sterile.

Aggressive substances may damage the pipette tips.

- Check whether the pipette tips are resistant to the chemicals used.

This product is a single-use item. Pipette tips and trays are not to be cleaned or used more than once.

2.3.2.2 Use during automatic pipetting

epMotion

The optical sensor does not recognize whether the pipette tips on the epMotion worktable are for single (epT.I.P.S. Motion Rack, epT.I.P.S. Motion Reload) or multiple use (epT.I.P.S. Motion SafeRack).

- Load the entire epMotion worktable with epT.I.P.S. Motion SafeRacks if you are using the pipette tips multiple times.

The optical sensor checks the start position and the end position of the pipette tips in the rack. The optical sensor does not check whether pipette tips are missing in the middle of the rack.

- Do not remove any pipette tips from the rack.

epMotion 96 and epMotion 96xl

The device recognizes the size of the tip using the Trays code. Incorrectly loading the trays can lead to contamination of the pipetting head.

- Only use Trays loaded by the manufacturer.
- Do not manually load the Trays.

3 Product description

3.1 Features

The product name epT.I.P.S. stands for “eppendorf Totally Integrated Pipetting System”.

The epT.I.P.S. Motion Reloads comprise one tray in which there are 96 epT.I.P.S. Motion pipette tips. They can be used with the epMotion, epMotion 96 and epMotion 96xl devices.

Size of pipette tips	epMotion	epMotion 96	epMotion 96xl
10 µL	x	-	-
50 µL	x	x	-
300 µL	x	x	x
1000 µL	x	-	x

The tray for the epT.I.P.S. Motion Reloads has a code. This code enables the device to determine the size of the pipette tips and whether the pipette tips have a filter.

3.2 Usability of the pipette tips

The selection of suitable pipette tips for the epBlue worktable depends on the software version of the epMotion.

Size of pipette tips	Labware definitions in epBlue version < 40.5	Labware definitions in epBlue version > 40.5
10 µL	<ul style="list-style-type: none"> Pipette tips 10 µL are not supported by epBlue version < 40.5. 	<p>The Labware definition contains the dimensions of the TipHolder and the Tray. For all types of epT.I.P.S. Motion Reloads, a separate Labware definition is available.</p> <ul style="list-style-type: none"> epT.I.P.S. Motion Reloads xx µL: Labware-Definition Reload_tipxx
50 µL	<ul style="list-style-type: none"> <u>Height adapter 40 mm:</u> Labware-Definition Adap_40 <u>epT.I.P.S. Motion Rack 50 µL:</u> Labware-Definition tip50 	

Size of pipette tips	Labware definitions in epBlue version < 40.5	Labware definitions in epBlue version > 40.5
300 µL	<ul style="list-style-type: none"> • <u>Height adapter 40 mm:</u> Labware-Definition Adap_40 • <u>epT.I.P.S. Motion Rack 50 µL:</u> Labware definition tip300 	
1000 µL	<ul style="list-style-type: none"> • <u>epT.I.P.S. Motion Rack 1000 µL:</u> Labware-Definition tip1000 	

3.3 Product overview

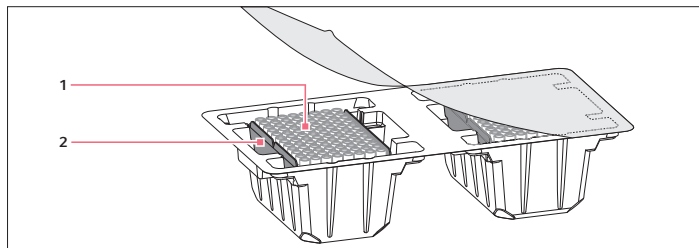


Fig. 3-1: epT.I.P.S. Motion Reloads

1 Pipette tips epT.I.P.S. Motion

2 Tray

4 Application

4.1 Preparation

4.1.1 epT.I.P.S. Motion Reloads on the TipHolder

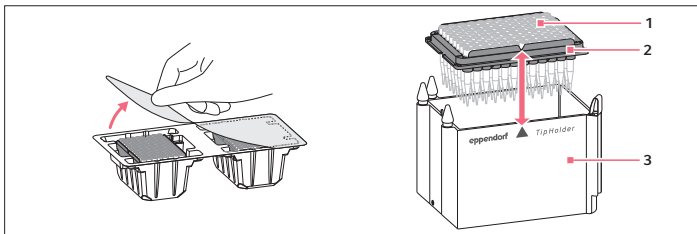


Fig. 4-1: Placing the tray on the TipHolder

1 Tips

3 TipHolder

2 Tray

Prerequisites:

- The pipette tips are not damaged.

1. Check that TipHolders that have been used multiple times are undamaged and do not show any signs of abrasion.
2. Place the tray on a TipHolder of the corresponding size.
The notch in the tray is located on the labeled side of the TipHolder.
3. For trays with 1000 μ L pipette tips, place a clip on the tray from above.
4. Bend the 4 tabs at the corners so that they grip around the tray.
The tray is protected against lifting.

i Do not stack TipHolders when using clips.

5. Place the TipHolders with the label facing to the front on an epMotion worktable location.

4.2 Operation

4.2.1 Load epMotion 96 or 96xl

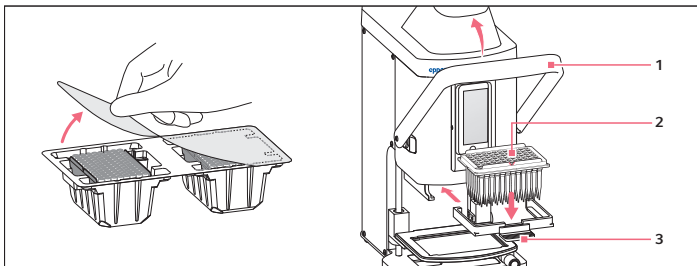


Fig. 4-2: Load epMotion

1 Lever

3 Handle of loading frame

2 Tray with notch

Prerequisites:

- The tray and pipette tips are not damaged.

1. Pull the lever forward.
2. Remove the loading frame from the device.
3. Place the tray with the pipette tips in the loading frame so that the notch in the tray is facing the handle of the loading frame.
4. Insert the loading frame.
5. Push the lever backward.


5 Storage

5.1 Storage

Racks, SafeRacks and Reloads must be placed with the bottom side down during storage. This ensures that the pipette tips are hanging in the Trays.

6 Disposal

6.1 Disposing of consumables

-  Information on the legal regulations that apply in your country can be obtained from your responsible local authority and your Eppendorf partner.

1. Check the legal regulations for disposal in your country.
2. Dispose of the consumables according to their labeling.

7 Technical data

7.1 Ambient conditions

Table 1: Ambient conditions during operation

Environment	For indoor use only.
Ambient temperature	5 °C to 45 °C
Relative humidity	10 % to 95 %, non-condensing
Atmospheric pressure	79.5 kPa to 106 kPa

Table 2: Ambient conditions during storage

Temperature during storage in transport packing	-20 °C to 55 °C
Temperature during storage without transport packing	-5 °C to 45 °C
Relative humidity	10 % to 95 %
Atmospheric pressure	70 kPa to 106 kPa

7.2 Material

Pipette tips	Polypropylene (PP)
Pipette tip filter	Polyethylene (PE)
Trays	Polypropylene (PP)
Protective foil of racks	Polyethylene (PE)
Blister packaging	Polyethylene terephthalate (PET)

8 Accessories

8.1 Article data

Description	Order no.
Box for epT.I.P.S.® Motion 1,000 µL Reload	0030 014 677
Box for epT.I.P.S.® Motion 10/50/300 µL Reload	0030 014 669
Clip for epT.I.P.S.® Motion Reloads	5075 751 070
TipHolder for epT.I.P.S.® Motion Reloads	5075 751 399
epT.I.P.S.® Motion as Reload System without filter	
Eppendorf Quality, 0.5 – 50 µL, ACT, 2,304 tips (24 trays × 96 tips)	0030 014 421
Eppendorf Quality, 5 – 300 µL, ACT, 2,304 tips (24 trays × 96 tips)	0030 014 464
Eppendorf Quality, 10 – 1,000 µL, ACT, 2,304 tips (24 trays × 96 tips)	0030 014 502
Eppendorf Quality, 10 µL, ACT, 2,304 tips (24 trays × 96 tips)	0030 014 545
with filter	
PCR clean, 0.5 – 50 µL, ACT, 2,304 tips (24 trays × 96 tips)	0030 014 430
PCR clean, 5 – 300 µL, ACT, 2,304 tips (24 trays × 96 tips)	0030 014 472
PCR clean, 10 – 1,000 µL, ACT, 2,304 tips (24 trays × 96 tips)	0030 014 510
PCR clean and sterile, 0.5 – 50 µL, ACT, 2,304 tips (24 trays × 96 tips)	0030 014 529
PCR clean and sterile, 5 – 300 µL, ACT, 2,304 tips (24 trays × 96 tips)	0030 014 537
PCR clean, 10 µL, ACT, 2,304 tips (24 trays × 96 tips)	0030 014 553
PCR clean and sterile, 10 µL, ACT, 2,304 tips (24 trays × 96 tips)	0030 014 561
PCR clean and sterile, 10 – 1,000 µL, ACT, 2,304 tips (24 trays × 96 tips)	0030 014 570

Evaluate Your Manual

Give us your feedback.

www.eppendorf.com/manualfeedback

Your local distributor: www.eppendorf.com/contact

Eppendorf SE · Barkhausenweg 1 · 22339 Hamburg · Germany
eppendorf@eppendorf.com · www.eppendorf.com